



**ETERNITY®**

powered by **AL DOBOWI**



**TYRE CATALOGUE 2013**

# TRA Classifications

## Earthmover



Service code	Tread type	Benefits
E1	Rib regular	Heat resistance
E2	Traction regular	Cut resistance
E3	Rock regular	Wear resistance
E4	Rock deep tread	Shock resistance
E7	Flotation	

## Loader



Service code	Tread type	Benefits
L2	Traction regular	Cut resistance
L3	Rock regular	Wear resistance
L4	Rock deep tread	Stability
L5	Rock extra deep tread	
L4S	Smooth deep tread	
L5S	Smooth extra deep	

## Grader



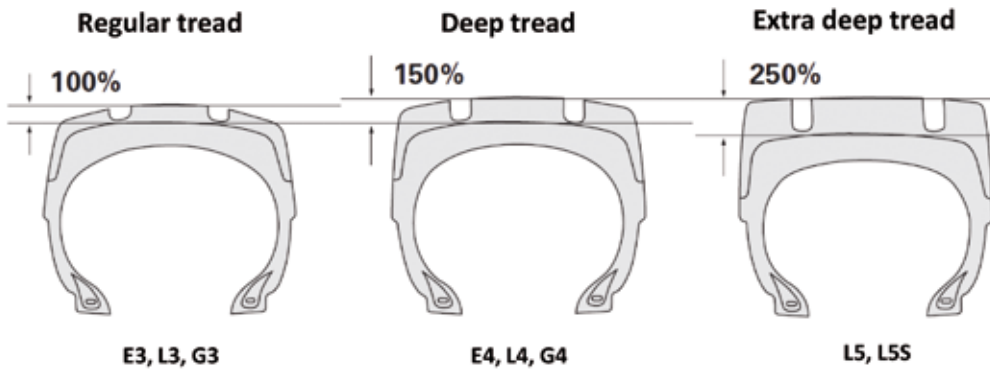
Service code	Tread type	Benefits
G2	Traction regular	Traction
G3	Rock regular	Directional stability

## Industrial



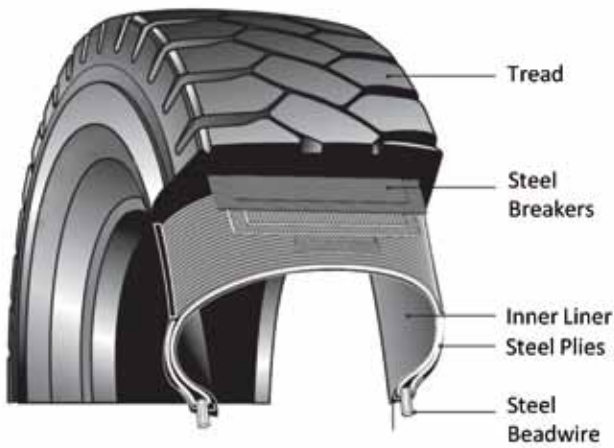
Service code	Tread type	Benefits
IND3	Traction regular	Wear resistance
IND4	Deep tread	Cut resistance
IND5	Extra deep tread	Stability

## Tread Depths

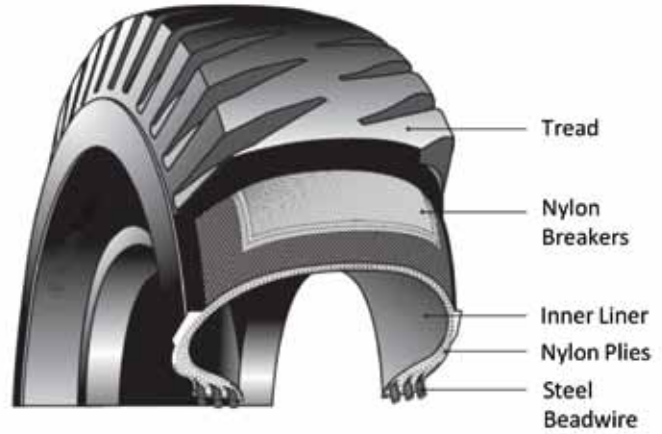


## Construction

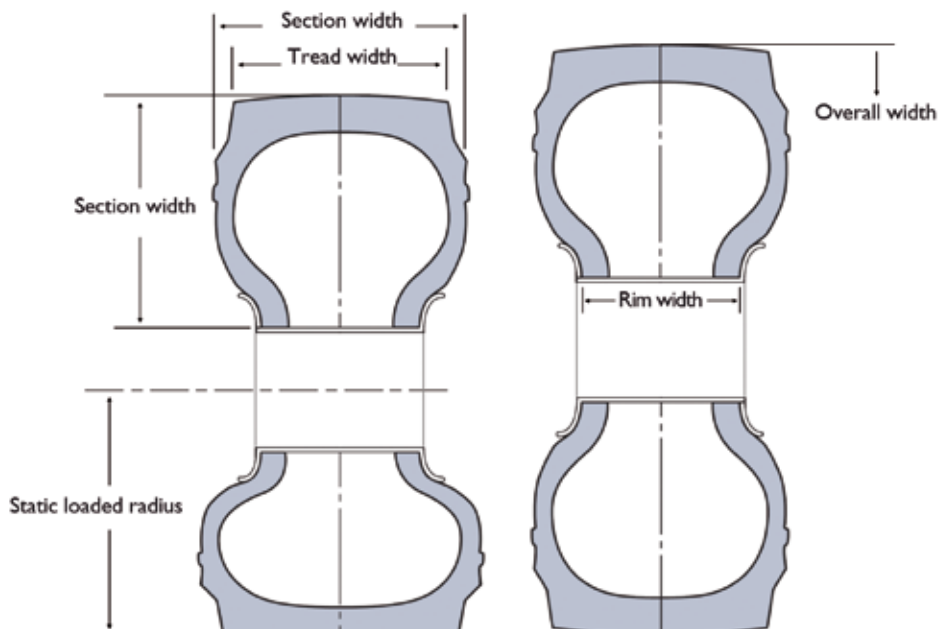
### Radial Tyre



### Biasply Tyre



## Tyre Dimensions



# Load Index

Load Index	Max Load (kg)	Load Index	Max Load (kg)	Load Index	Max Load (kg)	Load Index	Max Load (kg)	Load Index	Max Load (kg)	Load Index	Max Load (kg)	Load Index	Max Load (kg)
0	45	40	140	80	450	120	1400	160	4500	200	14000	240	45000
1	46.2	41	145	81	462	121	1450	161	4625	201	14500	241	46250
2	47.5	42	150	82	475	122	1500	162	4750	202	15000	242	47500
3	48.7	43	155	83	487	123	1550	163	4875	203	15500	243	48750
4	50	44	160	84	500	124	1600	164	5000	204	16000	244	50000
5	51.5	45	165	85	515	125	1650	165	5150	205	16500	245	51500
6	53	46	170	86	530	126	1700	166	5300	206	17000	246	53000
7	54.5	47	175	87	545	127	1750	167	5450	207	17500	247	54500
8	56	48	180	88	560	128	1800	168	5600	208	18000	248	56000
9	58	49	185	89	580	129	1850	169	5800	209	18500	249	58000
10	60	50	190	90	600	130	1900	170	6000	210	19000	250	60000
11	61.5	51	195	91	615	131	1950	171	6150	211	19500	251	61500
12	63	52	200	92	630	132	2000	172	6300	212	20000	252	63000
13	65	53	206	93	660	133	2060	173	6500	213	20600	253	65000
14	67	54	212	94	670	134	2120	174	6700	214	21200	254	67000
15	69	55	218	95	690	135	2180	175	6900	215	21800	255	69000
16	71	56	224	96	710	136	2240	176	7100	216	22400	256	71000
17	73	57	230	97	730	137	2300	177	7300	217	23000	257	73000
18	75	58	236	98	750	138	2360	178	7500	218	23600	258	75000
19	77.5	59	243	99	775	139	2430	179	7750	219	24300	259	77500
20	80	60	250	100	800	140	2500	180	8000	220	25000	260	80000
21	82.5	61	257	101	825	141	2575	181	8250	221	25750	261	82500
22	85	62	265	102	850	142	2650	182	8500	222	26500	262	85000
23	87.5	63	272	103	875	143	2725	183	8750	223	27250	263	87500
24	90	64	280	104	900	144	2800	184	9000	224	28000	264	90000
25	92.5	65	290	105	925	145	2900	185	9250	225	29000	265	92500
26	95	66	300	106	950	146	3000	186	9500	226	30000	266	95000
27	97.5	67	307	107	975	147	3075	187	9750	227	30750	267	97500
28	100	68	315	108	1000	148	3150	188	10000	228	31500	268	100000
29	103	69	325	109	1030	149	3250	189	10300	229	32500	269	103000
30	106	70	335	110	1060	150	3350	190	10600	230	33500	270	106000
31	109	71	345	111	1090	151	3450	191	10900	231	34500	271	109000
32	112	72	355	112	1120	152	3550	192	11200	232	35500	272	112000
33	115	73	365	113	1150	153	3650	193	11500	233	36500	273	115000
34	118	74	375	114	1180	154	3750	194	11800	234	37500	274	118000
35	121	75	387	115	1215	155	3875	195	12150	235	38750	275	121000
36	125	76	400	116	1250	156	4000	196	12500	236	40000	276	125000
37	128	77	412	117	1285	157	4125	197	12850	237	41250	277	128000
38	132	78	425	118	1320	158	4250	198	13200	238	42500	278	132000
39	136	79	437	119	1360	159	4375	199	13600	239	43750	279	136000

# Speed Index

Speed Index	Max Speed (km/h)	Speed Index	Max Speed (km/h)	Speed Index	Max Speed (km/h)	Speed Index	Max Speed (km/h)
A1	5	A8	40	J	100	R	170
A2	10	B	50	K	110	S	180
A3	15	C	60	L	120	ST	190
A4	20	D	65	M	130	U	200
A5	25	E	70	N	140	H	210
A6	30	F	80	P	150	V	240
A7	35	G	90	Q	160	W	270

# Load and Speed Variation

## Earthmover Service

Decrease in Speed	% Change in load
15 KPH	+12%
20 KPH	+10%
30 KPH	+6%
50 KPH	No change

## Grader Service

Increase in Speed	% Change in load
40 KPH	No change
50 KPH	-9%
60 KPH	-18%
65 KPH	-27%

## Loading and Industrial Service

Change in Speed	% Change in load
Static	+60%
1 KPH	+30%
5 KPH	+13%
10 KPH	No change
15 KPH	-7%
20 KPH	-12%
25 KPH	-15%

## Industrial Service on Smooth Surface

Loader tyre on smooth surface or runway	% Change in load
Static	+80%
1 KPH	+60%
5 KPH	+45%
10 KPH	+35%
15 KPH	+30%
20 KPH	+27%
25 KPH	+25%

# Tyre Handling



### Forklift tyre handling

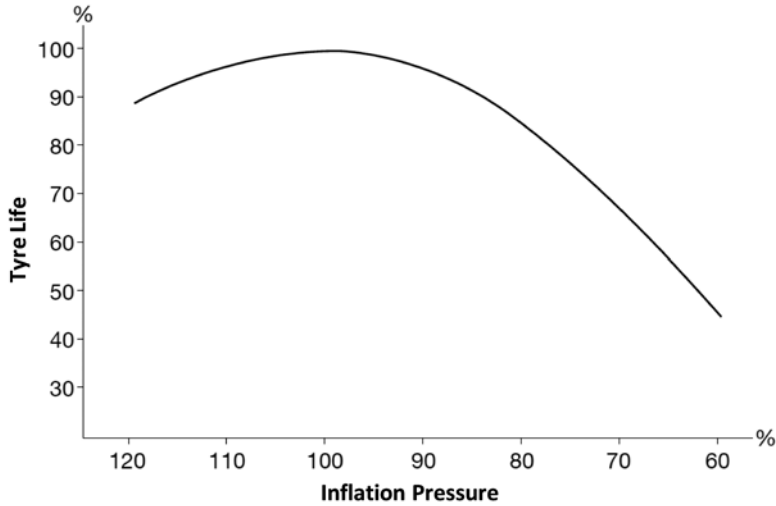
- Improper tyre handling can cause damage to the bead.
- Lay the tyre vertically across the forks.
- Use a round tube or fork at least six inches in diameter.
- Do not use a flat fork inside the tyre.

### Crane tyre handling

- Only use a wide nylon or rubber sling.
- Do not use a hook on the bead.
- Do not use a rope sling.

# Inflation Pressure

## Inflation Pressure and Tyre Life



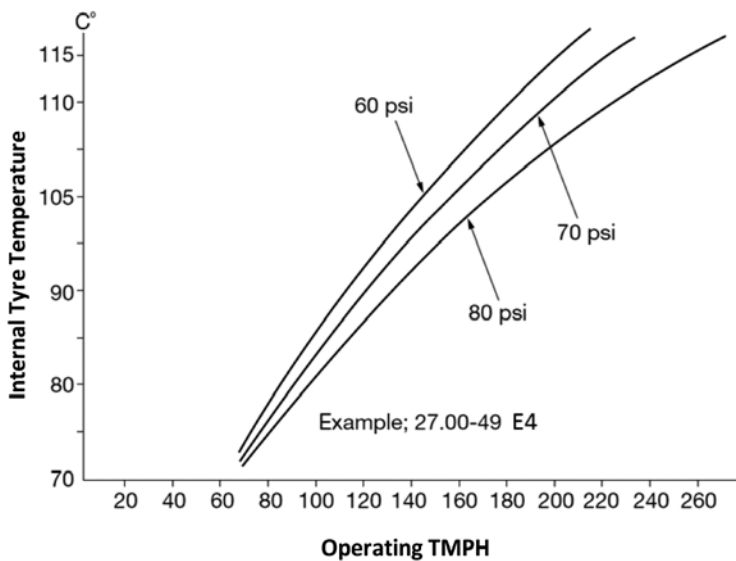
### Effects of Underinflation

- Excessive deflection, generating heat and leading to premature failure.
- Tread and ply separation.
- Radial sidewall cracking.
- Broken cords.
- Uneven tread wear.
- Cracks in the inner liner.
- Rim displacement causing air leaks.

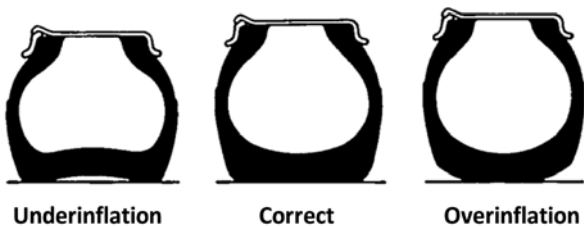
### Effects of Overinflation

- Excessive tread wear at the crown.
- Tyre becomes vulnerable to impact fractures.
- Excessive strain on the bead causes bead failure.
- Hard ride causes riding discomfort.
- Reduced traction causes wheel slipping.

## Inflation Pressure and Tyre Temperature

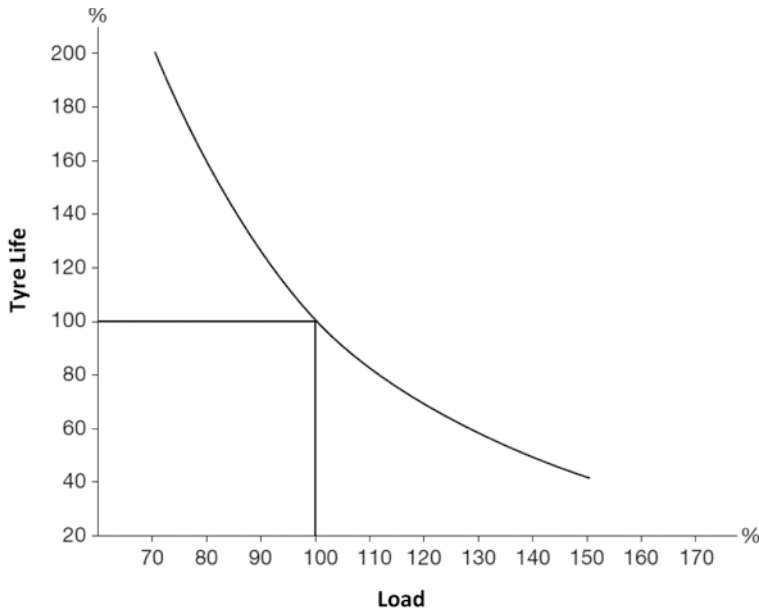


## Footprint and Inflation



# Loading

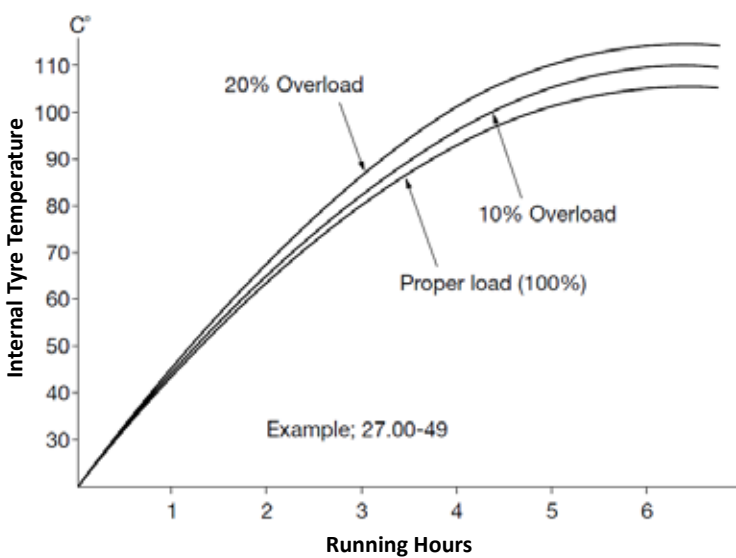
## Load and Tyre Life



### Effects of Overloading

- Excessive heat generation causing heat separation.
- Broken cords.
- Rapid tread wear.
- Bead failure.
- Risk of bursting.

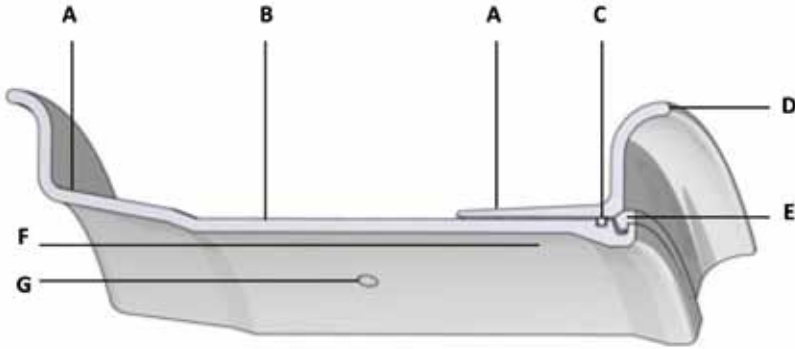
## Load and Tyre Temperature



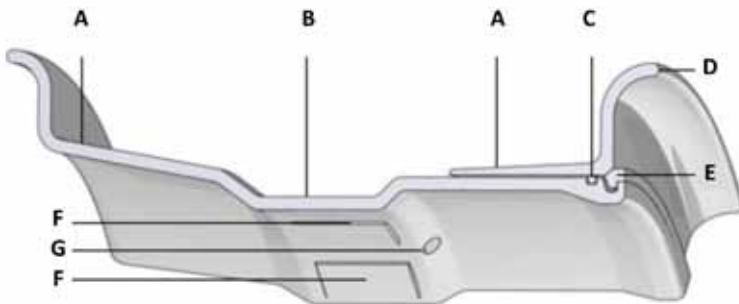
### Pressure Maintenance

- During normal operation the air pressure in the tyre increases as a result of the heat generation within the tyre. The increase in pressure differs from one tyre to the next, depending on the operation.
- If the air pressure increases more than 25% then the speed or load should be reduced because the tyre may overheat and cause a heat separation.
- Tyres should not be bled to compensate for the increase in pressure due to the operation.
- Valves should always be capped to keep mud and dust out of the seal.
- Pressure gauges should be calibrated periodically.

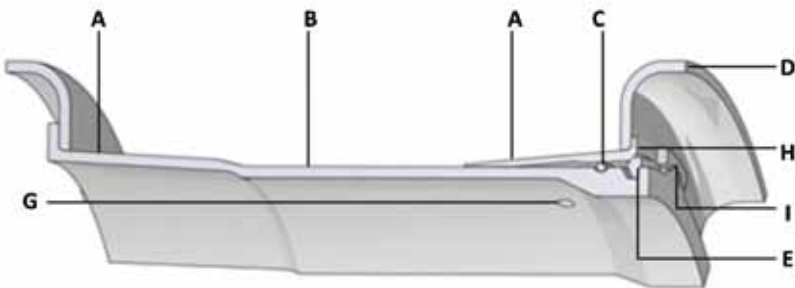
# OTR and Mining Rims



**3-Piece heavy duty rim**



**3-Piece grader rim**



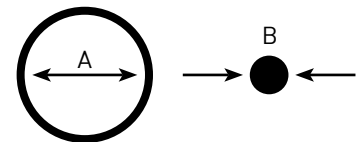
**5-Piece heavy duty and wide base rim**

## Rim Components

<b>A</b>	Tapered bead seat
<b>B</b>	Rim base
<b>C</b>	O-ring
<b>D</b>	Loose flange
<b>E</b>	Lock ring
<b>F</b>	Locating lugs
<b>G</b>	Valve hole
<b>H</b>	Pry bar pocket
<b>I</b>	Bead seat band driver

## O-ring Details

Rim size	A - Inches	B - Inches
25	22.44	0.385
29	26.25	0.385
33	30.13	0.385
35	32.13	0.385
39	36.13	0.385
45	41.13	0.385
49	45.13	0.385
51	46	46
57	51.63	0.5
63	57.27	0.5





# Tyre Problems and Causes

Tyre problem	Overload	High speed	Slippage	Over inflation	Under inflation	Excessive braking	Poor haul road	Poor vehicle maintenance	Poor rim
Tread cuts	✓	✓	✓	✓	✓		✓	✓	
Rapid, uneven tread wear	✓	✓	✓	✓	✓	✓	✓	✓	
Cracked and broken tread	✓		✓	✓		✓	✓		
Sidewall cuts	✓				✓		✓		
Tread separation	✓	✓			✓				
Ply separation	✓	✓			✓				
Bead failure	✓		✓	✓	✓	✓		✓	✓
Inner liner failure	✓	✓			✓				✓
Impact fractures	✓	✓		✓			✓		

# Vehicle Operating Guidelines

## General

- Avoid abrupt starts and stops.
- Do not operate on road shoulders.
- Reduce speed on turns.
- Do not turn steering wheels whilst stationary.
- Do not spin the tyres.
- Maintain correct inflation pressure.
- Remove rocks that get stuck between dual tyres or in the tread.
- Check rims and valves regularly for damage.
- Avoid rocks at loading and dumping areas.

## Loader operations

- Keep loading area clear of rocks and other obstacles.
- Avoid spilling rocks around the tyres.
- Avoid over loading.
- Load to the centre of the dump truck.

# Safety Information

- When demounting a tyre, always remove the valve core and exhaust all air from a tyre. Check that the valve stem is clear by running a piece of wire through the stem.
- Always use approved tyre and rim combinations for size and rim contour.
- Never exceed the manufacturers recommended tyre inflation pressure.
- Never leave a tyre unsecured in a vertical position.
- Always use a safety cage when inflating tyres.

# Polyurethane Tyre Fill

## Infinity Premium Fill

Shore hardness (A Durometer)	28 degrees
Tear strength (split)	3.85 KN/m
Tensile strength	1.599 MPa
Elongation	390 %



- Pumped into the tyre through the valve stem.
- Liquid polyurethane flatproofing polymer replaces all the air.
- Cures to a resilient synthetic rubber core in 24 hours.
- Eliminates flats and inflation maintenance.
- Works in any tyre with a sound casing.

- Tested to 55 degrees below zero.
- Eliminates potential explosion from air under pressure.
- Tyre carrying capacity remains the same as with air pressure.
- Polyurethane is pressurised to the same pressure as with air.
- No change in tyre dimensions.
- No change to rims or tyre fitment.



# TREAD PATTERNS

 **ETERNITY**<sup>®</sup>  
powered by **AL DOBOWI**

# OTR Radial Narrow Base



	ETB-169	ETB-B2	ETB-A2	ETB-B3	ETB-B5
14.00 R20	G2				
12.00 R24			E4		
14.00 R24		G2		IND4	E3
14.00 R25					E3
16.00 R24		G2			



	ETB-A5	ETB-B1	ETB-A6	INF-LB03S	ETB-B3
16.00 R25	E2	E2		E3	
18.00 R25			E2	E3	IND4



	ETB-A2	ETB-A9
18.00 R33	E4	E4
21.00 R35		E4
24.00 R35	E4	E4

## OTR Radial Wide Base



	ETM-03	ETB-A1	ETB-B5	ETB-A8	ETB-B7
17.5 R25	L3/E3	L3/E3	L3/E3		L5S
20.5 R25	L3/E3	L3/E3	L3/E3	L5	
23.5 R25	L3/E3	L3/E3	L3/E3	L5	



	ETM-03	ETB-A1	ETB-B5	ETB-A3	ETB-A7	ETB-A8
26.5 R25	L3/E3	L3/E3	L3/E3	L3/E3	E4	L5
29.5 R25	L3/E3	L3/E3	L4/E4	L3/E3	E4	L5
29.5 R29		L3/E3			E4	
35/65 R33					E4	L5

## Industrial



	INF-LL55	INF-LL42	INF-P2	INF-P1	INF-P3
16/70-20	IND2				
14.00-24		IND3			
16.00-25			IND3		
18.00-25				IND4	
18.00-33					IND4

## OTR Biasply Narrow Base



	INF-G2	INF-LL25	INF-E4	INF-LL90	INF-L5
12.00-24					L5
13.00-24	G2				
14.00-24	G2				
16.00-25		L3/E3			
18.00-25		L3/E3	E4		
18.00-33				E4	
21.00-35			E4		

## OTR Biasply Wide Base



	INF-E2/L2	INF-LL25	INF-E3/L3	INF-L5
15.5-25	E2/L2	L3/E3		
17.5-25	E2/L2	L3/E3		
20.5-25	E2/L2	L3/E3		L5
23.5-25	E2/L2	L3/E3		L5
26.5-25		L3/E3		L5
29.5-25		L3/E3		
29.5-29			L3/E3	

## Underground



50x14.00-23	L5				
50x19.00-25	L5				
50x25.00-25.1		L4			
55x19.00-25	L5				
55x19.00-34			L5		
59x26.00-27		L5			
59x29.00-27		L5			
59x19.00-35				L5	
12.00-24					L5S
14.00-24					L5S
16.00-25					L5S
18.00-25					L5S
17.5-25					L5S
20.5-25					L5S
26.5-25					L5S

## Underground Utility



10.00-15	L5			
14.5-15		L5		
10x16.5			L5	
12x16.5			L5	
8.25-20				L4
10.00-20		L3		
12.00-20		L3, L5		
36x12.5-20	L4			
18L-20		L4		
14.00-20	L5			



# ETB-169



### APPLICATION

- Articulated dump trucks.
- Rigid dump trucks.

### FEATURES AND BENEFITS

- Traction and grip.
- Designed for mine dump trucks.
- Excellent resistance to cutting.
- Puncture resistant pattern.

Size	Rating	Standard Rim	Section Width (mm)	Overall Diameter (mm)	NSD (mm)	TT/TL	TRA code	Max Load (Kg)	Inflation Pressure (Kpa)	Load Index
14.00 R20	20 PR	10.00	374	1232	21	TL	G2	5000	790	164/161F



# ETB-B2



### APPLICATION

- Graders.

### FEATURES AND BENEFITS

- Suitable for graders with a stable contour.
- Unique pattern design offers excellent traction and grip.

Size	Rating	Standard Rim	Section Width (mm)	Overall Diameter (mm)	NSD (mm)	TT/TL	TRA code	Max Load (Kg)	Inflation Pressure (Kpa)	Load Index
14.00 R24	★★	8.00TG	360	1350	26	TL	G2	3650	375	153 A8
16.00 R24	★★	10.00VA	425	1460	28	TL	G2	4625	375	161 A8



# ETB-A5



### APPLICATION

- Cranes
- Fire and rescue

### FEATURES AND BENEFITS

- Designed for high speed and long haul
- Superior comfortable ride
- High speed performance
- Superior traction on all surfaces

Size	Rating	Standard Rim	Section Width (mm)	Overall Diameter (mm)	NSD (mm)	TT/TL	TRA code	Max Load (Kg)	Inflation Pressure (Kpa)	Load Index
16.00 R25	★	11.25/2.0	432	1493	25	TL	E2	5450	475	167B
	★★						E2	7300	650	177B
	★★★						E2	7300	900	177E





# ETB-B1



## APPLICATION

- Cranes
- Fire and rescue

## FEATURES AND BENEFITS

- Tread design improves operator comfort with reduced road noise and precise handling response
- High speed capability
- Excellent traction in all conditions both on and off highways
- Exceptional casing durability

Size	Rating	Standard Rim	Section Width (mm)	Overall Diameter (mm)	NSD (mm)	TT/TL	TRA code	Max Load (Kg)	Inflation Pressure (Kpa)	Load Index
16.00 R25	★	11.25/2.0	432	1493	25	TL	E2	5450	475	167B
	★★						E2	7300	700	177B
	★★★						E2	7300	900	177E



# ETB-A6



## APPLICATION

- Cranes.
- Fire and rescue.

## FEATURES AND BENEFITS

- Mobile crane tyre for both on and off highway application.
- Superior durability and cool running with high speed.
- New generation tread pattern offers exceptional fuel economy.

Size	Rating	Standard Rim	Section Width (mm)	Overall Diameter (mm)	NSD (mm)	TT/TL	TRA code	Max Load (Kg)	Inflation Pressure (Kpa)	Load Index
18.00 R25	★	13.00/2.5	498	1615	30	TL	E2	7100	450	176B
	★★						E2	9250	650	185B
	★★★						E2	9500	900	186E



# INF-LB03S



## APPLICATION

- Cranes.
- Fire and rescue

## FEATURES AND BENEFITS

- Tread pattern designed for on and off road applications.
- Wide contact area improves grip.

Size	Rating	Standard Rim	Section Width (mm)	Overall Diameter (mm)	NSD (mm)	TT/TL	TRA code	Max Load (Kg)	Inflation Pressure (Kpa)	Load Index
16.00 R25	★★	11.25/2.0	412	1525	43	TL	E3	6000	800	170B
18.00 R25	★★	13.00/2.5	493	1654	47	TL	E3	8000	800	180B



# ETB-A2



## APPLICATION

- Articulated dump trucks.
- Rigid dump trucks.
- Graders.

## FEATURES AND BENEFITS

- Non directional deep tread pattern designed for muddy and soft surfaces.
- Excellent traction and floatation offers comfortable handling.
- Low rolling resistance provides good fuel economy.

Size	Rating	Standard Rim	Section Width (mm)	Overall Diameter (mm)	NSD (mm)	TT/TL	TRA code	Max Load (Kg)	Inflation Pressure (Kpa)	Load Index
12.00 R24	★★★	8.5	315	1245	31.5	TT		4250	830	158/155F
18.00 R33	★★	13.00/2.5	500	1875	54	TL	E4	10900	700	191B
24.00 R35	★★	17.00/3.5	655	2175	57	TL	E4	18500	700	209B



# ETB-B3



## APPLICATION

- Reach stacker
- Forklift

## FEATURES AND BENEFITS

- Suitable for straddle carriers, forklifts and port equipment
- Deep tread provides long life
- High carrying capacity

Size	Rating	Standard Rim	Section Width (mm)	Overall Diameter (mm)	NSD (mm)	TT/TL	TRA code	Max Load (Kg)	Inflation Pressure (Kpa)	Load Index
14.00 R24	★★★	10.00W/10.0	375	1368	60	TL	IND5	12500	1000	196A5
18.00 R25	★★★	13.00/2.5	498	1673	63.5	TL	IND4	21200	1000	214A5



# ETB-A9



## APPLICATION

- Articulated dump trucks.
- Rigid dump trucks.

## FEATURES AND BENEFITS

- Deep tread designed for severe and rocky surfaces.
- Used for underground mines, open pits and quarries.
- Specially designed sidewall provides protection from cutting.

Size	Rating	Standard Rim	Section Width (mm)	Overall Diameter (mm)	NSD (mm)	TT/TL	TRA code	Max Load (Kg)	Inflation Pressure (Kpa)	Load Index
18.00 R33	★	13.00/2.5	500	1875	49	TL	E4	8000	475	180B
	★★						E4	10900	700	191B
21.00 R35	★★	15.00/3.0	555	2040	53	TL	E4	14500	700	201B
24.00 R35	★	17.00/3.5	655	2175	58	TL	E4	13600	475	199B
	★★						E4	18500	700	209B



# ETM-03



## APPLICATION

- Articulated dump trucks.
- Rigid dump trucks.
- Loaders.
- Graders.

## FEATURES AND BENEFITS

- Aggressive, self cleaning tread.
- Excellent traction in tough, demanding applications.
- Wear and cut resistant tread compound.
- Reduced vibration and increased stability.

Size	Rating	Standard Rim	Section Width (mm)	Overall Diameter (mm)	NSD (mm)	TT/TL	TRA code	Max Load (Kg)	Inflation Pressure (Kpa)	Load Index
17.5 R25	★★	14.00/1.5	449	1339	29	TL	L3	8500	575	182A2
	★★						E3	5450	450	167B
20.5 R25	★★	17.00/2.0	517	1499	31	TL	L3	11500	575	193A2
	★★						E3	7300	450	177B
23.5 R25	★★	19.5/2.5	608	1623	34	TL	L3	14500	575	201A2
	★★						E3	9250	450	185B
26.5 R25	★★	22.00/3.0	679	1748	37	TL	L3	18500	575	209A2
	★★						E3	11500	450	193B
29.5 R25	★★	25.00/3.5	763	1886	40	TL	L3	22400	575	216A2
	★★						E3	14000	450	200B



# ETB-A1



## APPLICATION

- Articulated dump trucks.
- Rigid dump trucks.
- Loaders.
- Graders.

## FEATURES AND BENEFITS

- Versatile pattern designed for construction, stockpiling and loading applications.
- Superior traction.
- Superb stability offers a comfortable ride.

Size	Rating	Standard Rim	Section Width (mm)	Overall Diameter (mm)	NSD (mm)	TT/TL	TRA code	Max Load (Kg)	Inflation Pressure (Kpa)	Load Index
17.5 R25	★	14.00/1.5	445	1348	28	TL	L3	7100	500	176A2
	★★						L3	8500	650	182A2
20.5 R25	★	17.00/2.0	520	1492	26	TL	L3	9500	500	186A2
	★						E3	5600	375	168B
	★★						L3	11500	650	193A2
	★★						E3	7300	525	177B
23.5 R25	★	19.5/2.5	597	1617	31.5	TL	L3	12150	500	195A2
	★						E3	7100	375	176B
	★★						E3	9250	525	185B
26.5 R25	★	22.00/3.0	673	1750	36	TL	L3	15000	500	202A2
	★★						L3	18500	650	209A2
29.5 R25	★	25.00/3.5	750	1873	43	TL	L3	18000	500	208A2
	★★						L3	22400	650	216A2
29.5 R29	★	25.00/3.5	750	1975	43	TL	L3	19500	500	211A2
	★★						L3	23600	650	218A2



# ETB-B5



## APPLICATION

- Articulated dump trucks.
- Rigid dump trucks.
- Loaders.
- Graders.

## FEATURES AND BENEFITS

- Wide lug for long service life.
- Outstanding operating comfort.

Size	Rating	Standard Rim	Section Width (mm)	Overall Diameter (mm)	NSD (mm)	TT/TL	TRA code	Max Load (Kg)	Inflation Pressure (Kpa)	Load Index			
14.00 R24	★★	10.00W/10.0	375	1368	30	TL	E3	5600	700	168B			
	★★★									E3	6050	800	170B
14.00 R25	★★	10.00	375	1368	30	TL	E3	5600	700	168B			
	★★★									E3	6050	800	170B
17.5 R25	★	14.00/1.5	445	1348	26.5	TL	L3	7100	500	176A2			
	★									E3	4125	375	157B
	★★									L3	8500	650	182A2
	★★									E3	5450	525	167B
20.5 R25	★	17.00/2.0	520	1492	28.5	TL	L3	9500	500	186A2			
	★									E3	5600	375	168B
	★★									L3	11500	650	193A2
	★★									E3	7300	525	177B
23.5 R25	★	19.5/2.5	597	1617	32	TL	L3	12150	500	195A2			
	★									E3	7100	375	176B
	★★									L3	14500	650	201A2
	★★									E3	9250	525	185B
26.5 R25	★	22.00/3.0	673	1750	35	TL	L3	15000	500	202A2			
	★									E3	9000	375	184B
	★★									L3	18500	650	209A2
	★★									E3	11500	525	193B
29.5 R25	★	25.00/3.5	750	1873	57	TL	L4	18000	500	208A2			
	★									E4	10900	375	191B
	★★									L4	22400	650	216A2
	★★									E4	14000	525	200B



# ETB-A3



### APPLICATION

- Articulated dump trucks.
- Rigid dump trucks.
- Loaders.
- Graders.

### FEATURES AND BENEFITS

- Non directional standard tread depth pattern.
- Heat resistant tread compound.
- Designed for mining and off road operations.

Size	Rating	Standard Rim	Section Width (mm)	Overall Diameter (mm)	NSD (mm)	TT/TL	TRA code	Max Load (Kg)	Inflation Pressure (Kpa)	Load Index
26.5 R25	★	22.00/3.0	673	1750	38.5	TL	L3	15000	500	202A2
	★★						L3	18500	650	209A2
29.5 R25	★	25.00/3.5	750	1873	43	TL	L3	18000	500	208A2
	★★						L3	22400	650	216A2



# ETB-A7



### APPLICATION

- Articulated dump trucks.
- Rigid dump trucks.
- Loaders.

### FEATURES AND BENEFITS

- Deep tread pattern designed for mining and quarry operations.
- Unique non directional pattern provides optimum traction and tread life.
- Self cleaning pattern with stone ejectors.

Size	Rating	Standard Rim	Section Width (mm)	Overall Diameter (mm)	NSD (mm)	TT/TL	TRA code	Max Load (Kg)	Inflation Pressure (Kpa)	Load Index
26.5 R25	★	22.00/3.0	673	1798	58	TL	E4	9000	375	184B
	★★						E4	11500	525	193B
29.5 R25	★	25.00/3.5	750	1920	60	TL	E4	10900	375	191B
	★★						E4	14000	525	200B
29.5 R29	★	25.00/3.5	750	1975	60	TL	E4	11500	375	193B
	★★						E4	15000	525	202B
35/65 R33	★	28.00/3.5	890	2075	62.5	TL	E4	13600	350	199B
	★★						E4	17500	475	207B



# ETB-A8



## APPLICATION

- Loaders.
- Dozers.
- Graders.

## FEATURES AND BENEFITS

- Extra deep tread pattern for extremely rocky surfaces.
- Designed for underground mines, open pits and quarries.
- Superior sidewall cut resistance.
- Exceptional casing durability.

Size	Rating	Standard Rim	Section Width (mm)	Overall Diameter (mm)	NSD (mm)	TT/TL	TRA code	Max Load (Kg)	Inflation Pressure (Kpa)	Load Index
20.5 R25	★	17.00/2.0	521	1548	68	TL	L5	9500	500	186A2
	★★						L5	11500	650	193A2
23.5 R25	★	19.5/2.5	597	1673	78	TL	L5	12150	475	195A2
	★★						L5	14500	600	201A2
26.5 R25	★	22.00/3.0	673	1798	88	TL	L5	15000	500	202A2
	★★						L5	18500	650	209A2
29.5 R25	★	25.00/3.5	750	1920	95	TL	L5	18000	500	208A2
	★★						L5	22400	650	216A2
35/65 R33	★	28.00/3.5	890	2075	95	TL	L5	23000	500	217A2
	★★						L5	27250	650	223A2



# ETB-B7



## APPLICATION

- LHD.

## FEATURES AND BENEFITS

- Cut resistance compound.
- Extra deep pattern depth.
- Designed for underground mines.

Size	Rating	Standard Rim	Section Width (mm)	Overall Diameter (mm)	NSD (mm)	TT/TL	TRA code	Max Load (Kg)	Inflation Pressure (Kpa)	Load Index
17.5 R25	★★	14.00/1.5	445	1399	60	TT	L5S	8500	650	182A2



# INF-LL55



### APPLICATION

- Industrial vehicles.

### FEATURES AND BENEFITS

- Special directional tread pattern.
- Cut resistant compound.
- Good maneuverability and stability.

Size	PR	Standard Rim	Section Width (mm)	Overall Diameter (mm)	NSD (mm)	TT/TL	TRA code	Max Load (Kg)	Inflation Pressure (Kpa)	Max Speed (Km/h)
16/70-20	10	13.00-20	410	1075	20	TT	IND2	2712	250	5
								2400	250	10
								2232	250	15
								2040	250	25
16/70-20	14	13.00-20	410	1075	20	TT	IND2	5820	450	5
								5150	450	10
								4790	450	15
								4380	450	25



# INF-LL42



### APPLICATION

- Industrial vehicles.
- Forklifts.

### FEATURES AND BENEFITS

- Cooler running compound.
- Good maneuverability.

Size	PR	Standard Rim	Section Width (mm)	Overall Diameter (mm)	NSD (mm)	TT/TL	TRA code	Max Load (Kg)	Inflation Pressure (Kpa)	Max Speed (Km/h)
14.00-24	28	10	375	1370	30	TT/TL	IND3	18000	1000	0
								14500	1000	5
								13500	1000	10
								13000	1000	15





# INF-P2



## APPLICATION

- Industrial vehicles.
- Forklifts.
- Gantry cranes.
- Straddle carriers.

## FEATURES AND BENEFITS

- Special industrial tread compound.
- Wide contact area.
- High load carrying capacity.

Size	PR	Standard Rim	Section Width (mm)	Overall Diameter (mm)	NSD (mm)	TT/TL	TRA code	Max Load (Kg)	Inflation Pressure (Kpa)	Max Speed (Km/h)
16.00-25	32	11.25/2.0	430	1490	28.5	TT/TL	IND3	14125	875	5
								12500	875	10
								11625	875	15
								10625	875	25



# INF-P1



## APPLICATION

- Reachstackers.
- Gantry cranes.
- Straddle carriers.

## FEATURES AND BENEFITS

- Low cost per hour.
- Heat & Cut resistance compound.
- Reinforced casing.
- Strong bead package.

Size	PR	Standard Rim	Section Width (mm)	Overall Diameter (mm)	NSD (mm)	TT/TL	TRA code	Max Load (Kg)	Inflation Pressure (Kpa)	Max Speed (Km/h)
18.00-25	40	13.00/2.5	498	1673	57	TL	IND4	24400	1000	5
								21600	1000	10
								20000	1000	15
								18350	1000	25



# INF-P3



## APPLICATION

- Reachstackers.

## FEATURES AND BENEFITS

- Abrasive resistant compound.
- Bold and deep lug pattern.
- High ground contact area.

Size	PR	Standard Rim	Section Width (mm)	Overall Diameter (mm)	NSD (mm)	TT/TL	TRA code	Max Load (Kg)	Inflation Pressure (Kpa)	Max Speed (Km/h)
18.00-33	40	13.00/2.5	495	1877	50	TL	IND4	22600	900	5
								20000	900	10
								18600	900	15
								17000	900	25



# INF-E2/L2



## APPLICATION

- Loader.
- Grader.

## FEATURES AND BENEFITS

- Cut resistant compound.
- Self cleaning directional tread design.
- Wide ground contact.

Size	PR	Standard Rim	Section Width (mm)	Overall Diameter (mm)	NSD (mm)	TT/TL	TRA code	Max Load (Kg)	Inflation Pressure (Kpa)	Max Speed (km/h)
15.5-25	12	12.00/1.3	395	1275	24	TL	L2	5600	400	10
							E2	3250	250	50
17.5-25	12	14.00/1.5	400	1350	25.5	TL	L2	6150	350	10
							E2	3650	225	50
17.5-25	14	14.00/1.5	400	1350	25.5	TL	L2	6700	400	10
							E2	4000	275	50
17.5-25	16	14.00/1.5	400	1350	25.5	TL	L2	7300	475	10
							E2	4250	300	50



# INF-G2



## APPLICATION

- Graders.

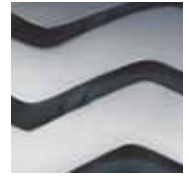
## FEATURES AND BENEFITS

- Bold angulated directional lugs.
- Superior traction.
- Cut resistant compound.

Size	PR	Standard Rim	Section Width (mm)	Overall Diameter (mm)	NSD (mm)	TT/TL	TRA code	Max Load (Kg)	Inflation Pressure (Kpa)	Max Speed (km/h)
13.00-24	12	8.00TG	310	1265	23	TT/TL	G2	5450	450	10
							G2	2575	300	40
14.00-24	12	8.00TG	360	1350	24	TT/TL	G2	6300	425	10
							G2	3025	250	40



# INF-LL25



## APPLICATION

- Articulated dump trucks.
- Rigid dump trucks.
- Loaders.
- Dozers.
- Graders.

## FEATURES AND BENEFITS

- Cut and heat resistant compound.
- Low contact pressure.
- Progressive tread pattern with self heat dissipation.

Size	PR	Standard Rim	Section Width (mm)	Overall Diameter (mm)	NSD (mm)	TT/TL	TRA code	Max Load (Kg)	Inflation Pressure (Kpa)	Max Speed (Km/h)
16.00-25	28	11.25/2.0	430	1490	28.5	TT/TL	L3	11500	750	10
							E3	6700	575	50
16.00-25	32	11.25/2.0	430	1490	28.5	TT/TL	L3	12500	875	10
							E3	7300	650	50
18.00-25	32	13.00/2.5	495	1615	30	TL	L3	15000	750	10
							E3	8750	575	50
18.00-25	40	13.00/2.5	495	1615	30	TL	L3	17000	950	10
							E3	9750	700	50
15.5-25	12	12.00/1.3	395	1275	25	TL	L3	5600	400	10
							E3	3250	250	50
17.5-25	16	14.00/1.5	445	1350	25.5	TT/TL	L3	7300	475	10
							E3	4250	300	50
20.5-25	16	17.00/2.0	520	1490	28.5	TT/TL	L3	8250	350	10
							E3	5450	275	50
20.5-25	20	17.00/2.0	520	1490	28.5	TT/TL	L3	9500	450	10
							E3	6000	325	50
23.5-25	16	19.5/2.5	595	1615	31.5	TT/TL	L3	9500	300	10
							E3	6150	225	50
23.5-25	20	19.5/2.5	595	1615	31.5	TT/TL	L3	10900	375	10
							E3	7300	300	50
26.5-25	28	22.00/3.0	675	1750	40	TT/TL	L3	15500	475	10
							E3	10000	350	50
29.5-25	28	25.00/3.5	750	1875	40	TL	L3	17500	425	10
							E3	11500	325	50



# INF-E3/L3



## APPLICATION

- Articulated dump trucks.
- Loaders.
- Dozers.

## FEATURES AND BENEFITS

- Cut resistant, cooler running compound.
- Specially designed pattern with high sea area.
- Superior stability.
- High contact area.

Size	PR	Standard Rim	Section Width (mm)	Overall Diameter (mm)	NSD (mm)	TT/TL	TRA code	Max Load (Kg)	Inflation Pressure (Kpa)	Max Speed (km/h)
29.5-29	28	25.00/3.5	750	1975	40	TL	L3	19000	425	10
							E3	12150	325	50



# INF-E4



## APPLICATION

- Rigid dump trucks.

## FEATURES AND BENEFITS

- Heat & Cut resistance compound.
- Self cooling design.
- Reinforced casing.

Size	PR	Standard Rim	Section Width (mm)	Overall Diameter (mm)	NSD (mm)	TT/TL	TRA code	Max Load (Kg)	Inflation Pressure (Kpa)	Max Speed (Km/h)
18.00-25	32	13.00/2.5	498	1673	57	TL	E4	15000	750	10
							E4	8750	575	50
18.00-25	40	13.00/2.5	498	1673	57	TL	E4	17000	950	10
							E4	9750	700	50
21.00-35	36	15.00/3.0	575	2005	42	TL	E4	23000	750	10
							E4	12800	550	50
21.00-35	40	15.00/3.0	575	2005	42	TL	E4	23500	800	10
							E4	14000	625	50



# INF-LL90



## APPLICATION

- Rigid dump trucks.

## FEATURES AND BENEFITS

- Abrasive resistant compound.
- Bold and deep lug pattern.
- High ground contact area.

Size	PR	Standard Rim	Section Width (mm)	Overall Diameter (mm)	NSD (mm)	TT/TL	TRA code	Max Load (Kg)	Inflation Pressure (Kpa)	Max Speed (Km/h)
18.00-33	32	13.00/2.5	495	1877	50	TL	L4	17500	750	10
							E4	10300	575	50
18.00-33	40	13.00/2.5	495	1877	50	TL	L4	20000	900	10
							E4	10900	650	50



# INF-L5



## APPLICATION

- Loaders.
- Dozers.

## FEATURES AND BENEFITS

- Abrasive resistant compound.
- Bold and extra deep lug pattern.
- High ground contact area.
- Self cleaning tread pattern.

Size	PR	Standard Rim	Section Width (mm)	Overall Diameter (mm)	NSD (mm)	TT/TL	TRA code	Max Load (Kg)	Inflation Pressure (Kpa)	Max Speed (Km/h)
12.00-24	32	8.5	315	1275	60	TT	L5	9800	760	10
20.5-25	24	17.00/2.0	528	1542	65	TL	L5	10300	520	10
23.5-25	24	19.5/2.5	597	1674	73	TL	L5	12520	475	10
26.5-25	32	22.00/3.0	673	1799	89	TL	L5	17530	550	10



# 50x14.00-23



## APPLICATION

- Coal Shuttle.

## FEATURES AND BENEFITS

- High load carrying capacity.
- Extra deep tread for increased traction and long tread life.

Size	PR	Rim width	Section Width (mm)	Overall Diameter (mm)	NSD (mm)	TT/TL	TRA code
50x14.00-23	36	11	410	1361	66	TL	L5
Size	PR	Inflation Pressure (Kpa)	Max Load (Kg)	Max Speed at load (Km/h)	Max Distance per hour (km)		
50x14.00-23	36	900	14260	5	16		
			12620	10	10		
			11700	15	5.5		
			10727	25	3.4		



# 50x25.00-25.1



## APPLICATION

- Trailer.

## FEATURES AND BENEFITS

- High load carrying capacity.
- Heat resistant tread.

Size	PR	Rim width	Section Width (mm)	Overall Diameter (mm)	NSD (mm)	TT/TL	TRA code
50x25.00-25.1	50	22	645	1224	33	TL	L4
Size	PR	Inflation Pressure (Kpa)	Max Load (Kg)	Max Speed at load (Km/h)	Max Distance per hour (km)		
50x25.00-25.1	50	1170	31600	5	16		
			27990	10	10		
			26000	15	5.5		
			23790	25	3.4		



# 55x19.00-25



## APPLICATION

- LHD.

## FEATURES AND BENEFITS

- Extra deep tread for improved traction.
- Cut resistant tread compound.

Size	PR	Rim width	Section Width (mm)	Overall Diameter (mm)	NSD (mm)	TT/TL	TRA code
55x19.00-25	36	14	495	1397	70	TL	L5
Size	PR	Inflation Pressure (Kpa)	Max Load (Kg)	Max Speed at load (Km/h)	Max Distance per hour (km)		
55x19.00-25	36	830	13300	5	16		
			11800	10	10		
			10970	15	5.5		
			10030	25	3.4		



# 55x19.00-34



## APPLICATION

- LHD.

## FEATURES AND BENEFITS

- Higher load carrying capacity.
- Cut resistant tread.

Size	PR	Rim width	Section Width (mm)	Overall Diameter (mm)	NSD (mm)	TT/TL	TRA code
55x19.00-34	42	16	483	1397	62	TL	L5
Size	PR	Inflation Pressure (Kpa)	Max Load (Kg)	Max Speed at load (Km/h)	Max Distance per hour (km)		
55x19.00-34	42	760	15150	5	16		
			13430	10	10		
			12490	15	5.5		
			11416	25	3.4		



# 59x26.00-27



## APPLICATION

- Trailer.
- Loader.

## FEATURES AND BENEFITS

- High load carrying capacity.
- Heat resistant tread.

Size	PR	Rim width	Section Width (mm)	Overall Diameter (mm)	NSD (mm)	TT/TL	TRA code
59x26.00-27	50	23	670	1453	82	TL	L5
Size	PR	Inflation Pressure (Kpa)	Max Load (Kg)	Max Speed at load (Km/h)	Max Distance per hour (km)		
59x26.00-27	50	1030	35000	3	10		
			29600	5	16		
			26200	10	10		
			24400	15	5.5		
			22300	25	3.4		



# 59x29.00-27



## APPLICATION

- Trailer.
- Loader.

## FEATURES AND BENEFITS

- High load carrying capacity.
- Heat resistant tread.

Size	PR	Rim width	Section Width (mm)	Overall Diameter (mm)	NSD (mm)	TT/TL	TRA code
59x29.00-27	50	26	745	1453	72	TL	L5
Size	PR	Inflation Pressure (Kpa)	Max Load (Kg)	Max Speed at load (Km/h)	Max Distance per hour (km)		
59x29.00-27	50	900	32000	5	16		
			28350	10	10		
			26350	15	5.5		
			24000	25	3.4		





# 50x19.00-25



## APPLICATION

- LHD.

## FEATURES AND BENEFITS

- Low profile for improved access.
- Extra deep tread for improved traction.
- Cut resistant tread compound.

Size	PR	Rim width	Section Width (mm)	Overall Diameter (mm)	NSD (mm)	TT/TL	TRA code
50x19.00-25	44	14	490	1254	55	TL	L5
Size	PR	Inflation Pressure (Kpa)	Max Load (Kg)	Max Speed at load (Km/h)	Max Distance per hour (km)		
50x19.00-25	44	960	14460	5	16		
			12800	10	10		
			11900	15	5.5		
			10880	25	3.4		



# 59x19.00-35



## APPLICATION

- Trailer.

## FEATURES AND BENEFITS

- High load carrying capacity.
- Heat resistant tread.

Size	PR	Rim width	Section Width (mm)	Overall Diameter (mm)	NSD (mm)	TT/TL	TRA code
59x19.00-35	50	15	456	1516	55	TL	L5
Size	PR	Inflation Pressure (Kpa)	Max Load (Kg)	Max Speed at load (Km/h)	Max Distance per hour (km)		
59x19.00-35	50	1170	17500	5	16		
			15500	10	10		
			14400	15	5.5		
			13100	25	3.4		



# ETN-L5S



## APPLICATION

- LHD.

## FEATURES AND BENEFITS

- Cut resistance compound.
- Extra deep pattern depth.
- Designed for underground mines.

Size	PR	Standard Rim	Section Width (mm)	Overall Diameter (mm)	NSD (mm)	TT/TL	TRA code	Max Load (Kg)	Inflation Pressure (Kpa)	Max Speed (Km/h)
12.00-24	32	8.5	315	1275	60	TT	L5S	9800	760	10
14.00-24	32	10.00W	375	1417	62	TT	L5S	10980	1000	10
16.00-25	32	11.25/2.0	432	1542	52	TL	L5S	12380	830	10
18.00-25	40	13.00/2.5	498	1673	80	TL	L5S	15014	760	10
17.5-25	24	14.00/1.5	445	1400	67	TL	L5S	11790	700	10
	32						L5S	12800	830	10
20.5-25	24	17.00/2.0	528	1541	68	TL	L5S	10300	550	10
26.5-25	40	22.00/3.0	710	1798	89	TL	L5S	20000	700	10



# UTILITY



## APPLICATION

- Utility mining vehicles.

## FEATURES AND BENEFITS

- Low cost per hour.
- Driver comfort with good maneuverability.
- Designed for underground mines.

Size	PR	Standard Rim	Section Width (mm)	Overall Diameter (mm)	NSD (mm)	TT/TL	TRA code	Max Load (Kg)	Inflation Pressure (Kpa)	Max Speed (Km/h)
10.00-15	36	7.5	278	915	56	TT	L5	7950	1000	10
36x12.5-20	28	9	310	950	35	TT	L4	7450	900	10
14.00-20	36	10	375	1310	62	TT	L5	10600	900	10



# UTILITY



Size	PR	Standard Rim	Section Width (mm)	Overall Diameter (mm)	NSD (mm)	TT/TL	TRA code	Max Load (Kg)	Inflation Pressure (Kpa)	Max Speed (Km/h)
14.5-15	36	11	370	900	54	TT	L5	10660	1000	10
18L-20	32	15	457	1118	32	TT	L4	11158	1000	10
10.00-20	28	7.5	278	1073	32	TT	L3	7800	1000	10
12.00-20	28	8.5	315	1146	32	TT	L3	8600	1000	10
12.00-20	36	8.5	315	1185	59	TT	L5	10980	1000	10



# UTILITY



Size	PR	Standard Rim	Section Width (mm)	Overall Diameter (mm)	NSD (mm)	TT/TL	TRA code	Max Load (Kg)	Inflation Pressure (Kpa)	Max Speed (Km/h)
10x16.5	14	8.25	264	773	41	TT	L5	2750	760	10
12x16.5	14	9.75	307	831	43	TT	L5	3250	700	10



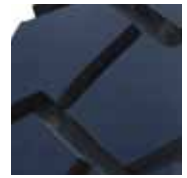
# UTILITY



Size	PR	Standard Rim	Section Width (mm)	Overall Diameter (mm)	NSD (mm)	TT/TL	TRA code	Max Load (Kg)	Inflation Pressure (Kpa)	Max Speed (Km/h)
8.25-20	18	6.5	232	972	33	TT	L4	4800	900	10



# SOLID TYRES



## APPLICATION

- LHD.
- Trailers.

## FEATURES AND BENEFITS

- High quality bonding technique.
- Premium grade rubber.
- Designed for underground mines.
- Designed and manufactured in Australia.

Wheel Size	Machine Load Carrying Capacity (tons)	Max Speed Loaded (Km/h)	Max Speed Unloaded (Km/h)	Overall Diameter (mm)	Overall Width (mm)	Rubber Gauge (mm)
1400 x 560 x 200	40	8	24	1400	560	200
1370 x 700 x 180	55	8	24	1370	700	180
1390 x 640 x 180	50	8	24	1390	640	180
1400 x 480 x 150	7	10	24	1400	480	150
1400 x 480 x 150	8.7	10	25	1400	480	150
1450 x 640 x 180	25	8	24	1450	640	180
1420 x 680 x 200	40	8	24	1420	680	200
1220 x 620 x 150		8	24	1220	620	150
1220 x 620 x 150	37	8	24	1220	620	150
1450 x 640 x 190	50	5	24	1450	640	190
1500 x 470 x 150	40	10	24	1500	470	150



# Warranty policy



## LIMITED WARRANTY

OTR and mining tyres branded Eternity and Infinity are warranted to be free from manufacturing defects within the manufacturer's control, provided they are used within the published designed specifications for Eternity and Infinity tyres.

The warranty is applicable to the original purchaser and is not assignable to subsequent purchasers.

The warranty applies pro rata to the first life of the tyre until the tread is worn to the tread wear indicator in which case the tyre is considered worn out.

The warranty applies pro rata to tyres for a period of twenty four months from date of manufacture.

If a tyre becomes unserviceable due to a manufacturing defect, the tyre shall be compensated for, pro rata on invoice value, calculated by applying the lesser of the following:

- The remaining tread depth percentage
- Age based compensation according to the following chart

Age of tyre	Maximum Compensation
0 to 6 months	100% Compensation
6 to 12 months	90% Compensation
12 to 18 months	75% Compensation
18 to 24 months	50% Compensation
24 months or older	No Compensation

## LIMITED WARRANTY EXCLUSIONS

The warranty does not apply to: Tyres previously adjusted, repaired or retreaded; tyres purchases more than twenty four months from date of manufacture; tyres modified such as re-grooving or re-lugging.

The warranty does not cover costs of: Materials added to the tyre such as tyre fill, sealer, balancer; costs of services such as transport, mounting and demounting and tyre disposal.

The warranty does not cover tyre failure, damage or irregular wear resulting from: Misuse, improper mounting, misapplication, use of non-approved rims, improper inflation, overloading, running flat; misalignment or imbalance of wheels or rims, defective brakes or shock absorbers; underfoot conditions such as cuts, punctures, impact breaks, penetrations; exposure to fire, chemicals, oil or corrosion.

All other warranties, including the implied warranties of merchantability and fitness for a particular purpose are expressly disclaimed to the extent permitted by law.

All obligations or liabilities for indirect, incidental, punitive or consequential damage are hereby excluded to the extent permitted by law, including economic loss, loss of profit, loss of use of vehicle, loss of time, personal injury or death.



 **ETERNITY**<sup>®</sup>  
powered by **AL DOBOWI**

(Space for Distributor's stamp)

